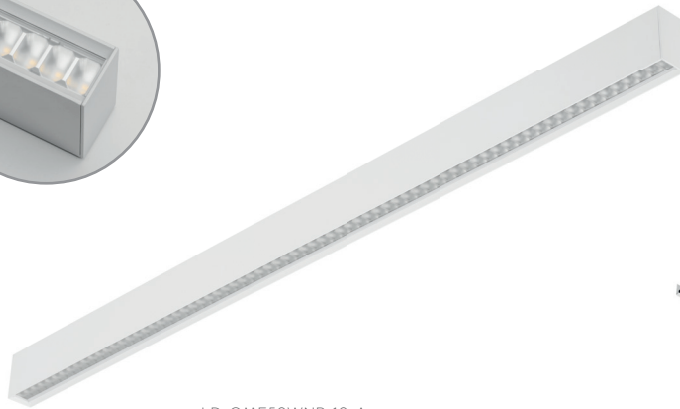
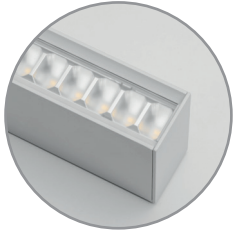


PL Oprawa liniowa **EN** Linear light fixture **DE** Linienleuchte **RU** Линейный светильник **CS** Lineární svítidlo **SK** Lineárne svietidlo
HU Profil lámpatest **HR** Linearna svjetiljka **FR** Luminaire linéaire **ES** Luminaria lineal **IT** Plafoniera lineare **RO** Corp de iluminat liniar
LT Linijinis šviestuvas **LV** Līnijas gaismeklis **ET** Liinivalgusti **PT** Luminária linear **BE** Свяцільнік лінейны **UK** Лінійний світильник
BG Линейно осветително тяло **SL** Linearna svetilka **BS** Linearna svjetiljka **SRP** Linearna svjetiljka **SR** Linearna svetiljka
MK Линеарна светилка **MO** Corp de iluminat liniar

OMEGA



LD-OME50WNB-10-A
LD-OME50WNB-10-C



LD-OME30WNB-10-L

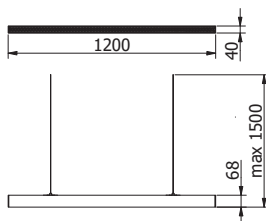


LD-OME30WNB-10-T

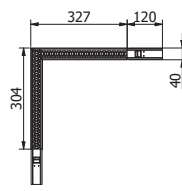


LK-OMEGA-0P

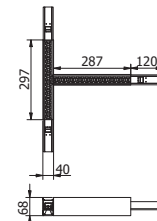
	INFO	W	LN					
LD-OME50WNB-10-A	with power cable	50 W	15	● 4000 K	4500 lm	aluminium + PMMA	1420 g	5902801245923
LD-OME50WNB-10-C	without power cable							5902801245992
LD-OME30WNB-10-L	-	30 W	-	● 4000 K	2700 lm	aluminium	940 g	5902801245985
LD-OME30WNB-10-T		-		-	-		-	1060 g
LK-OMEGA-0P		-	-	-	-	-	100 g	5902801246012



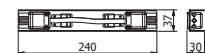
LD-OME50WNB-10-A
LD-OME50WNB-10-C



LD-OME30WNB-10-L



LD-OME30WNB-10-T



LK-OMEGA-0P